



Lafayette uni for me



Lafayette USA Corp.
1580 Sawgrass Corporate Pkwy
Suite 130 - Sunrise, FL 33323



CALL CENTER
+1 855 758 0777 Ext. 6287



lafayettetextiles.us
uniformesales@lafayette.com

INTRODUCING THE NEW
HIGH PERFORMANCE
FABRICS

Lafayette
uni for me



Lafayette

**LAFAYETTE
HEADQUARTERS**
BOGOTÁ - COLOMBIA



OUR COMPANY

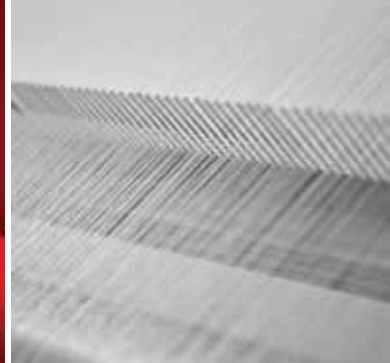
Lafayette is a Colombian company with **more than 70 years of experience in the textile industry**. It is a vertically integrated business involving spinning, weaving, and finishing. It is the leader in the Latin American market for high tech polyester fabrics in both woven and knit.

Lafayette produces its own advance polyester wich can be blended with cotton or lycra to create **excellent durability, resistance and easy maintenance**.

Lafayette has offices in **Ecuador, Venezuela, Peru, Costa Rica** and **Mexico** and representatives in different parts of the world, like the **United States, Central America, Italy** and **Spain** among others.



WHY LAFAYETTE



70 YEARS
OF EXPERIENCE
IN THE MARKET



NO DUTY ON FABRICS AND GARMENTS
DUE TO THE FREE TRADE AGREEMENT
BETWEEN THE US AND COLOMBIA

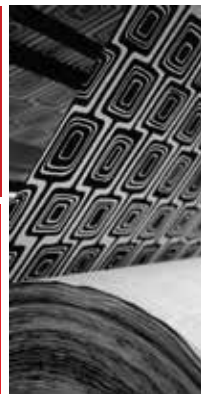
SHORT
TRANSIT
TIME



IN HOUSE
TESTING
LABORATORIES

LOW MINIMUMS
FOR CUSTOM ORDERS

PRODUCTS IN STOCK
NO MINIMUMS
IN STOCK GOODS



FULL
PACKAGE

ADVICE AND ASSISTANCE
IN DESIGN WITHOUT COST

FABRICS FOR UNIFORMS
PERFORMANCE AND
HIGH TECH FINISHES

PRESENCE
IN DIFFERENT
COUNTRIES



COMPLIANCE
WITH ASTM
STANDARDS

AMERICAN
TIME
ZONES

POSSIBLE FINISHES: BRUSHED, NAPPING, EMBOSING, ANTIMICROBIAL,
MOISTURE WICKING, UV PROTECTION, FLUID REPELLENCY, WATERPROOF
WATERPROOF + BREATHABILITY, THERMAL ISOLATION AND SOIL RELEASE



KNITS AND
WOVENS

4 QUALITY
CONTROL
POINTS

ADVICE AND ASSISTANCE
TO THE END USER
WITHOUT COST





TAGS / TECHNOLOGIES

Improving performance and functionality of our fabrics. Users obtain the right balance between **textile innovation**, **quality**, **easy care** and **additional benefits** based on their particular needs.



WICKING +

Moisture management technology fabric, wicks moisture away from the skin for a superior comfort.



STRETCH +

Fabric elongation gives the user freedom of movement for a **higher comfort**.



SOIL RELEASE +

Soil Release technology for easy care combined with moisture wicking technology for a superior comfort.



THERMAL +

Thermal barrier helps maintain the body temperature.



PERFORMANCE +

Higher durability and **easy care** without compromising comfort.



HI-VIS +

Technology to **improve fabric visibility** to protect workers exposed to higher levels of risk.



WATERPROOF +

Acts as a **water barrier** keeping the user dry and comfortable.



RESITANCE +

Ripstop weaving construction to increase fabric tear resistance.



WATER REPELLENT+

Technology that acts as a **barrier to protect** the fabric and user from unexpected liquid spills.



BREATHABLE / WATERPROOF +

Special **backing blocks water** passing through while allowing water vapor to pass to the exterior **keeping the user dry and comfortable**.



BREATHABLE +

Combining **polyester durability** with the **comfort and freshness of cotton**.



SUN PROTECTION +

Fabric acts as a **shield to protect the user from UV rays** (ASTM 6603).



HOSPITALITY, CASINOS & RESORTS

Fabrics for **front and back of the house, chefs, restaurant personnel, casinos and resorts** with up to date design and finishes.



SCHOOL UNIFORMS

Fabrics for **preschool, middle and highschool students** as well as **school sports, teams and faculty** that allow the users to worry about what's really important in life.

SECURITY UNIFORMS

Fabrics for workers who are exposed to conditions where their work involves them in high risk enviroments.

These uniforms allow them to be highly visible, these fabrics are intended for **body & security guards, police and firemen**.



Lafayette
uni for me

ADVANCED TEXTILES FOR UNIFORMS

Lafayette Uni for me has developed a full line of **intelligently designed textile solutions** for uniforms, tested for *best performance and durability*, in accordance with the *standards of their use*.



CORPORATE APPAREL

Uniform fabrics for **administrative, operational** and **sales teams** that guarantee **durability**, employees **comfort** and help to build **strong company image**.



HEALTH & PERSONAL CARE

Fabrics for **students** and **professionals** in different areas of the **healthcare industry**, that prevent body fluids and chemicals coming into contact with the skin.



CORPORATE SOCIAL RESPONSIBILITY

We understand sustainability as the balance that must exist between **economic growth, social progress and environmental responsibility**, by optimizing our resources without compromising those of the future.

SOCIAL RESPONSIBILITY

We place importance on constantly monitoring the **community's perception of our activities**. To this end, a team from our company has opened a dialog with the different interest groups as a means of evaluating our impact.

LAFAYETTE KINDERGARTEN

Hosts **75 students** between the ages of 2-6 years old. 90% of the children are from the local area.

We **work with locals and with local authorities** on an ongoing basis to identify their support needs, responding in turn with genuinely effective contributions that are valued by the community.

We periodically and permanently monitor the impact our activities in term of noise and air quality.



WE DEVELOP
TECHNOLOGICAL PROCESSES
THAT MINIMIZE
ENVIRONMENTAL IMPACT



WE RECOVER
COOLING WATER
FROM THE PRESSURE DYEING PROCESS,
REUSING AS PROCESS WATER

WE ARE NOW ABLE
TO RECYCLE **84%**
OF THE WATER USED
IN THE FACTORY!

WE HAVE
PARTIALLY
RENOVATED
THE LIGHTING
OF OUR FACILITIES
WITH LONG-LASTING,
ENERGY-SAVING AND
MERCURY-FREE
LIGHT BULBS
AND TORCHES

WE HAVE
REDUCED OUR
WATER CONSUMPTION
FROM 17KG TO 14KG
PER KILOGRAM OF FABRIC



WE CONTROL OUR NOISE POLLUTION THROUGH **DOUBLE WALLS** AND **ISOLATIONS**
AND **MOTOR EXHAUSTS, ACOUSTIC HOODS** FOR COMPRESSORS,
AND BY **PLANTING TREES ON THE PREMISES** TO BOLSTER INSULATION

WE HAVE INVESTED CLOSE TO **3.2 BILLION COLOMBIAN PESOS** IN A COAL BOILER,
WHICH **ENABLES THE TRANSITION TO CLEAN COMBUSTION.**
THIS HAS THE ADDED BENEFIT OF BURNING COAL WITH THE EMISSION OF THE
SAME PARTICLES AS WHEN GAS IS BURNED, BUT WITHOUT ANY NEGATIVE IMPACT

HAZARDOUS RESIDUES
ARE **STORED** IN A SPECIALLY
DESIGNED ENCLOSURE



WE HAVE
CONVERTED
ALL BOILERS
FOR USE WITH
NATURAL GAS
INSTEAD OF
CRUDE OIL

SOME OF OUR BASE
MATERIALS
ARE PRODUCED
USING A PERCENTAGE
OF **RECYCLED FIBERS**



THE ENVIRONMENT

We develop **Technological Processes** that **minimize environmental impact.**

